

Rolling machine Type KWM

More than 150
production lines



Rolling machine Type KWM

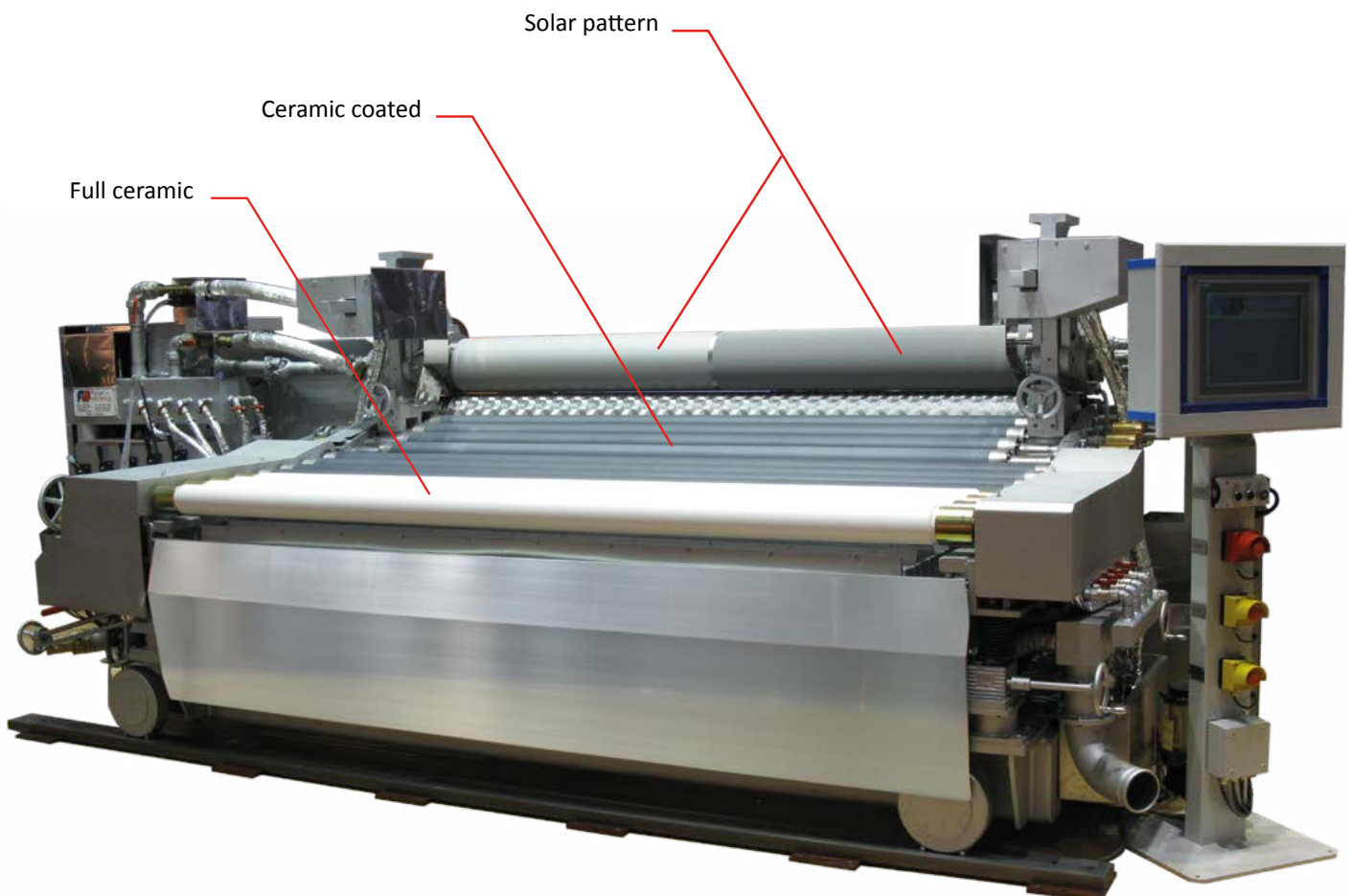
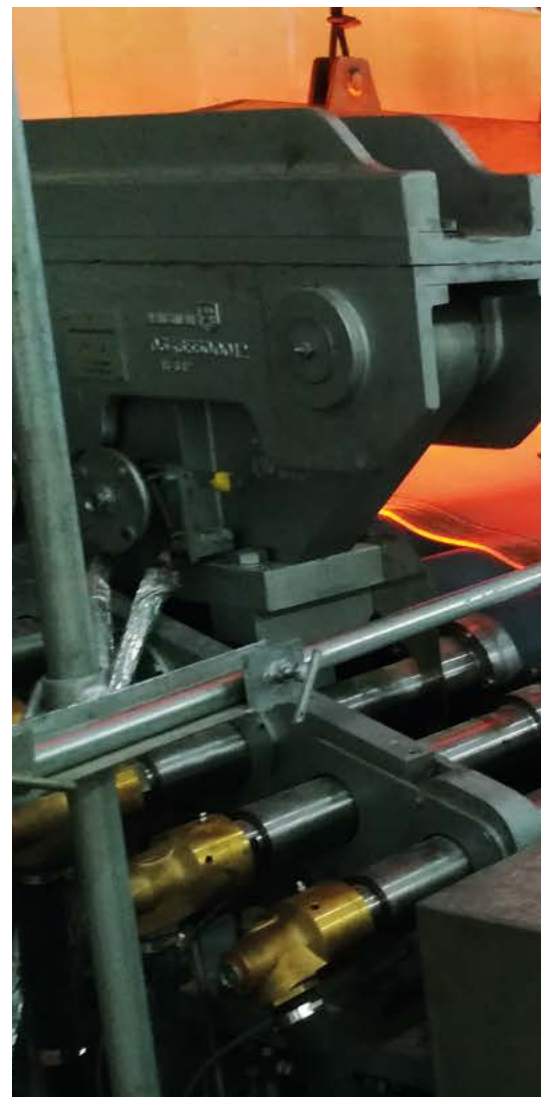
The KWM is used for continuous production of raw, figured and wired (armoured) glass production.

With special coated transport rollers, the machine is the perfect choice for **solar glass production**.

For high end products we also offer full ceramic rollers. High efficiency of the machine is guaranteed by the sturdy construction and the smooth, precise operation.

Features like pre-installed spare converters and Ethernet connection for production data acquisition are standard. The KWM is available in working widths from 600 to up to 3.950 mm and a roller diameter up to 460 mm.

We realize outputs up to 300 tpd. Pressure systems with up to 7 tons per side are also available. A wide range of adjustments enable the adaptation of the cast glass rolling machine to the various feeder geometries.





KWM 8i

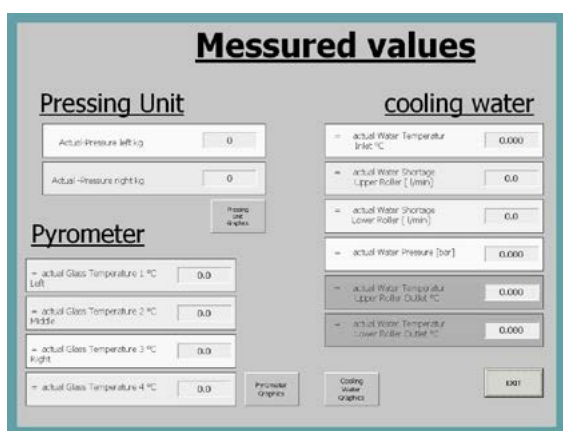


KWM 8e

Electric control and control unit

As control unit, a SIEMENS S7/300 unit is in use. The Screen will be a Color-Comfort-Panel from SIEMENS.

The infinitely variable speed control for all driving motors will be activated at the screen. The transport speed for all driving motors can together or individually be increased or reduced. For the various possible glass processing's, the control unit has a memory for up to 50 different glass processing parameters. These parameters can be stored in the memory and can easily called again if needed for processing.



Measuring technology

The operating board is located near by the machine.

It is equipped with a Control-Panel for the programming of the machine on a stand-alone stand. At the stand-alone stand are also three emergency-off buttons installed. The first one -red button- sets the machine into a fixed operation speed (for example 1 m/min – it is adjustable).

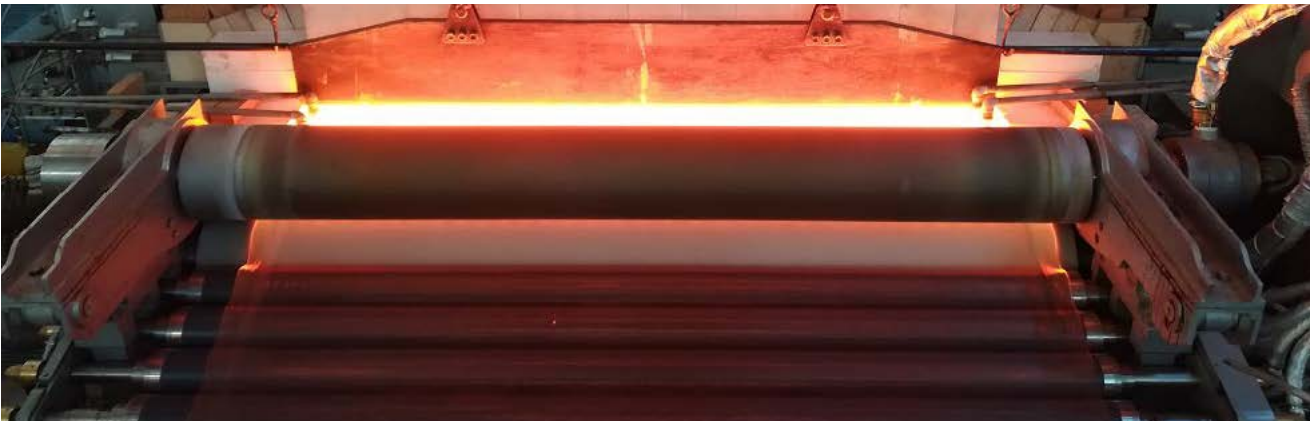
The second one – black button - will stop the rolling machine and leaves the rolling table running. The third one – yellow button – is emergency out and stops the whole system.



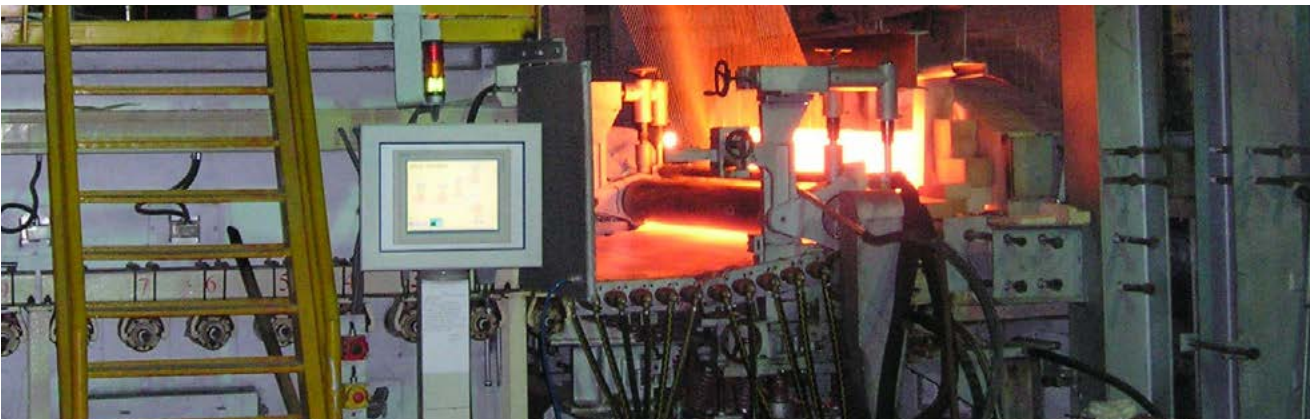
Operating board



Main roller- ϕ 460 mm



3.950 mm gross width



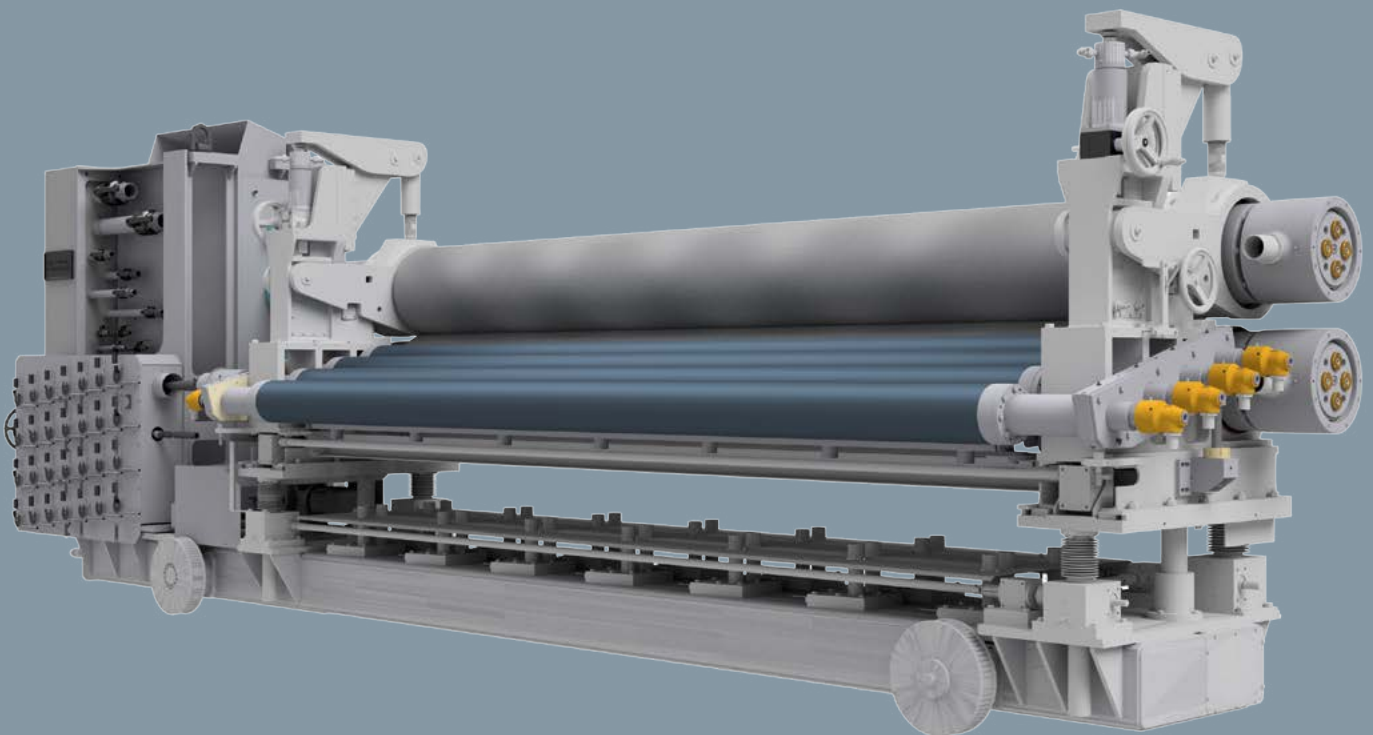
Wire mesh feeding equipment



Thin glass production

General specification

Glass product	Solar-, pattern-, wired-, foam
Output of the production line	40 - 300 tpd
Gross ribbon width	600 - 3.950 mm
Diameter of main rollers	180 - 460 mm
Glass thickness	2,0 - 8,0 mm
Rolling velocity	0,4 - 14 m/min
Transport rollers	80 - 180 mm
Material Transport rollers	Steel, ceramic coated, full ceramic
Pressure units	1,2 - 7 tons per side
Drive units	AC-motors with encoder and reduction gear



Fickert + Winterling Maschinenbau GmbH

Wölsauer Straße 20
D-95615 Markredwitz

Phone: +49 (0) 92 31 - 5 02 - 0
Fax: +49 (0) 92 31 - 5 02 - 52

info@fickertwinterling.de
www.fickertwinterling.de