

# Rolling machine Type KWM

**More than 100  
production lines**



## Rolling machine Type KWM

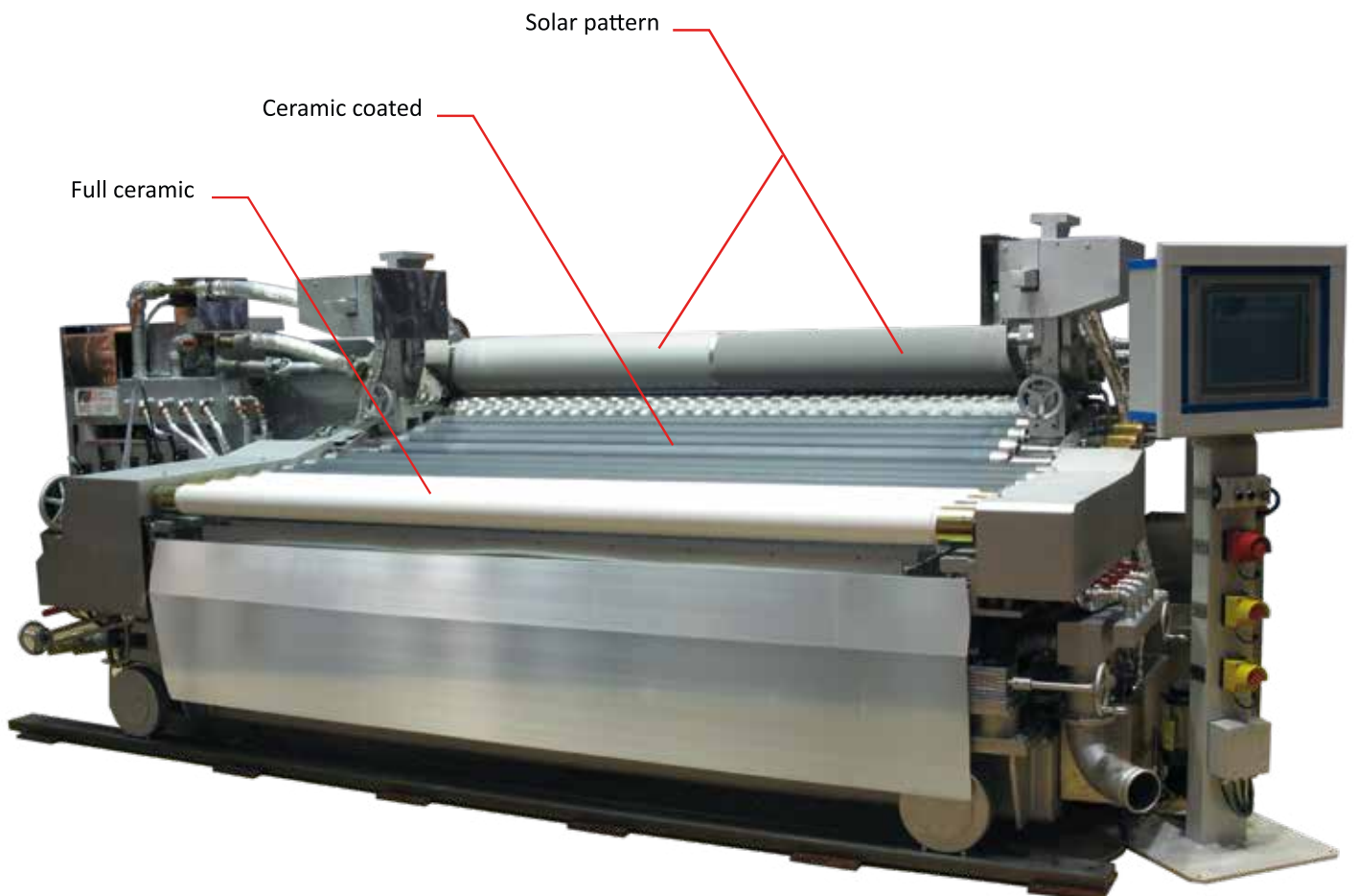
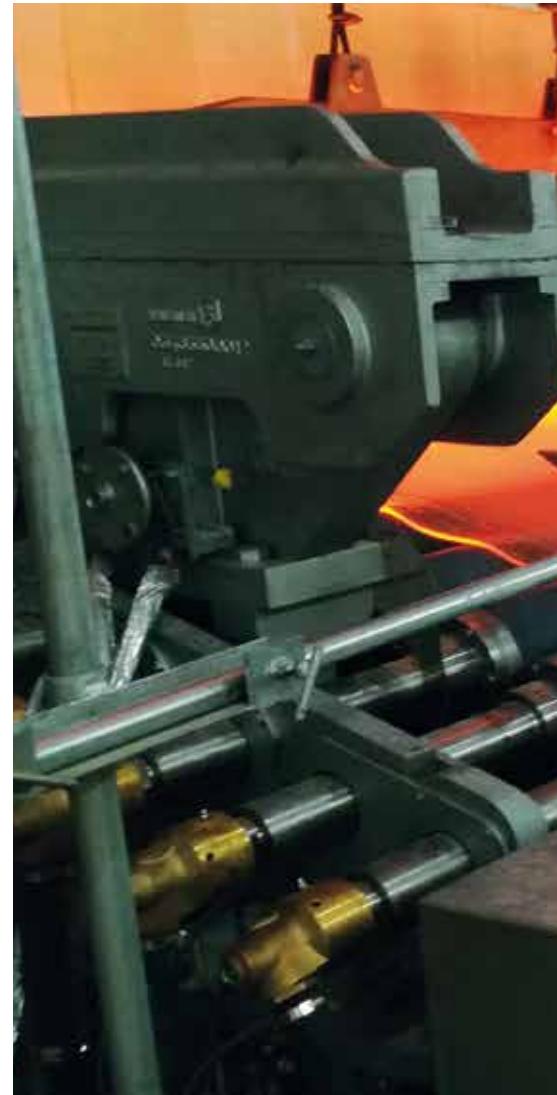
The KWM is used for continuous production of raw, figured and wired (armoured) glass production.

With special coated transport rollers, the machine is the perfect choice for **solar glass production**.

For high end products we also offer full ceramic rollers. High efficiency of the machine is guaranteed by the sturdy construction and the smooth, precise operation.

Features like pre-installed spare converters are standard. The KWM is available in working widths from 600 to up to 3.400 mm and a roller diameter up to 460 mm.

We realize outputs up to 250 tpd. Pressure systems with up to 5 tons per side are also available. A wide range of adjustments enable the adaptation of the cast glass rolling machine to the various feeder geometries.







KWM 8i

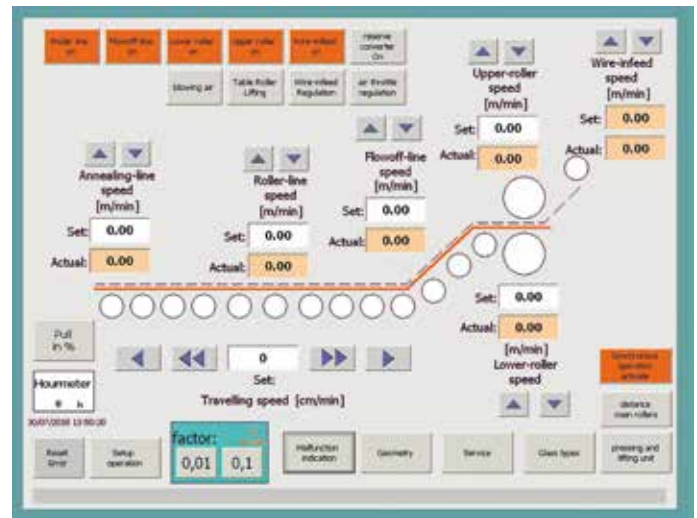


KWM 8e

## Electric control and control unit

### Hardware

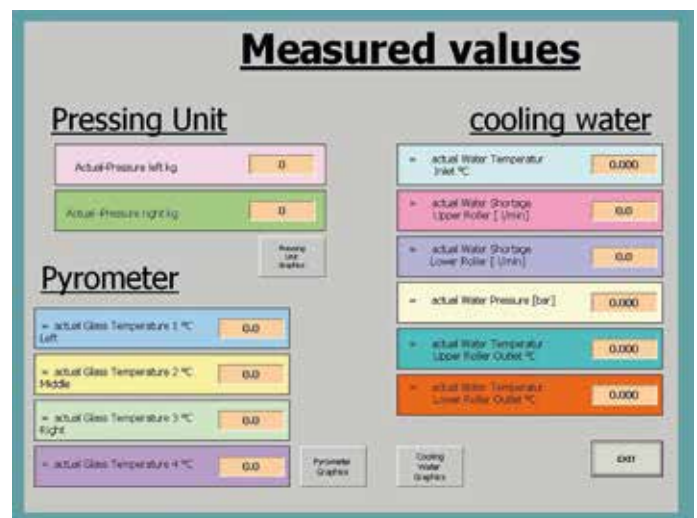
- SIEMENS S7/300 control unit
- SEW frequency controller
- SIEMENS touch Color-Comfort-Panel
- Stand-alone stand with three Emergency off buttons



User interface

### Various control opportunities

- variable speed control for all axes
- Transport speed adaptations collectively or individually
- Speed adaption for different main roller diameters
- Memory for up to 50 different glass-processing parameters.
- Motorized or manual pressure unit



Measuring technology

### Additional features

- Central lubrication system – for all roller bearings
- Carriage drive to drive the machine in working position
- Measurement technology
- Process data acquisition (Option)
- Cooling down unit

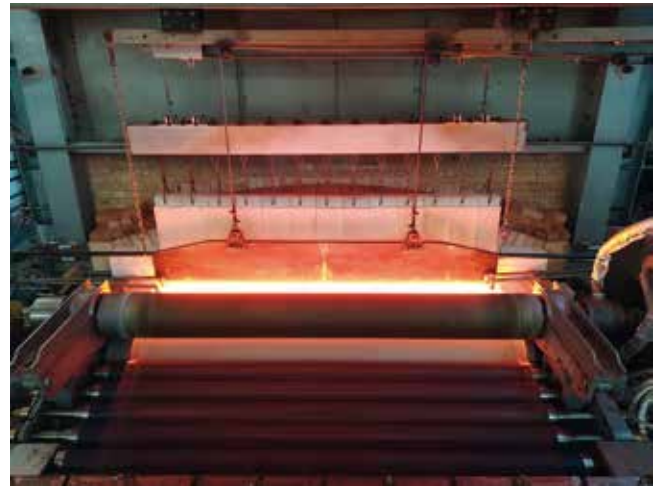


Central lubrication





Main roller- $\varnothing$  460 mm



3.4 m gross width



Wire mesh feeding equipment



Thin glass production



Serial production



High performance slide bearings

## Technical data

Glass product	Solar-, pattern- wired-, foam
Output of the production line	40 – 250 tpd
Gross ribbon width	600 – 3400 mm
Diameter of main rollers	180 - 460 mm
Glass thickness	2,0 – 8,0 mm
Rolling velocity	0,4 -14 m/min
Transport rollers	80 – 180 mm
Material Transport rollers	steel, ceramic coated, full ceramic
Pressure units	1,2 – 5 tons per side
Drive units	AC-motors with encoder and reduction gear

